

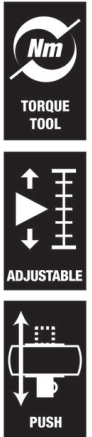
Click-Torque C 2 Push R/L adjustable torque wrench for clockwise and anti-clockwise torque-control, 20-100 Nm, 1/2" x 20-100 Nm
Click-Torque Push R/L adjustable torque wrenches for clockwise and anti-clockwise torque-control



EAN:	4013288218926	Size:	450x60x60 mm
Part number:	05075625001	Weight:	1312 g
Article number:	Click-Torque C 2 Push R/L	Country of origin:	TW
		Customs tariff number:	82041100

- For clockwise and anti-clockwise torque-control thanks to the smooth reversing of the captive square head insert
- Measuring range: 20-100 Nm; precise to +/- 3% as per DIN EN ISO 6789-1:2017-07
- 45 teeth and 1/2" square head drive with socket locking
- Easy setting and saving of the desired torque value with audible and tactile clicks when reaching the scale values
- Audible and tactile release mechanism when the set torque value is reached

Click torque wrench in the unmistakable Wera design. For clockwise and anti-clockwise torque-control. Very robust design with high accuracy as per DIN EN ISO 6789-1: 2017-07. Easy setting and saving of the default value. The audible and tactile clicks on reaching the scale values facilitate the safe setting of the desired torque value. The robust release mechanism guarantees a clearly audible and tactile release signal when the set torque is reached. With captive 3/4" square head insert to change direction. 1/2" square head drive with socket locking.



Web link

https://products.wera.de/en/torque_tools_series_click-torque_wrenches_click-torque_push_r_l_adjustable_torque_wrenches_for_clockwise_and_anti-clockwise_torque-control

Wera - Click-Torque C 2 Push R/L
05075625001 - 4013288218926

Wera Werkzeuge GmbH
Korzter Straße 21-25
D-42349 Wuppertal
Tel: +49 (0)2 02 / 40 45-0
E-Mail: info@wera.de

Click-Torque C 2 Push R/L adjustable torque wrench for clockwise and anti-clockwise torque-control, 20-100 Nm, 1/2" x 20-100 Nm
 Click-Torque Push R/L adjustable torque wrenches for clockwise and anti-clockwise torque-control



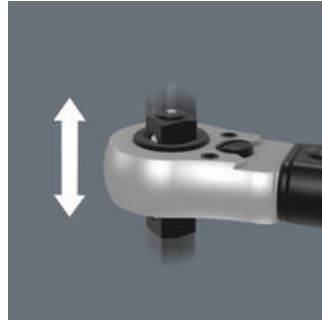
For right and left direction

Exact

Simple and safe



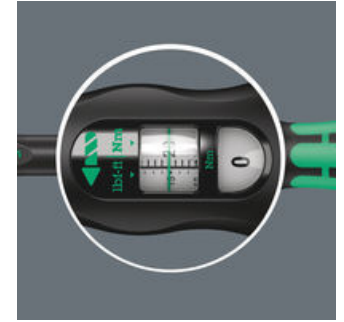
Reversing with square head insert



The Click-Torque torque wrench is suitable for clockwise and anti-clockwise torque-control. Very smooth change of direction thanks to captive square head insert.



Precise to ± 3% as per DIN EN ISO 6789-1:2017-07.



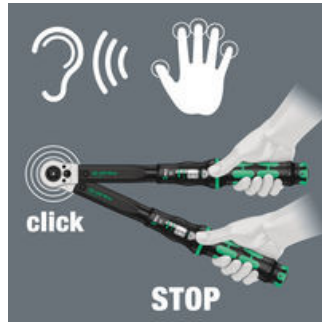
Easy setting and saving of the desired torque value; readable on the main and fine scales.

Simple setting

Release mechanism

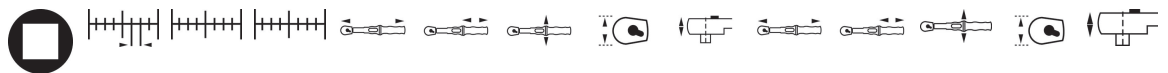


With audible and tactile clicks when adjusting the scale values.



When the set torque value is reached, an audible and tactile mechanism triggers.

Further versions in this product family:



	inch	Nm	Nm	lbf. ft.	mm	mm	mm	mm	mm	inch	inch	inch	inch	inch
05075625001	1/2"	0.5	20-10 0	15-73	405	140	47	43	18.5	15 15/16"	5 33/64"	1 27/32"	1 11/16"	45/64"

Web link

https://products.wera.de/en/torque_tools_series_click-torque_wrenches_click-torque_push_r_l_adjustable_torque_wrenches_for_clockwise_and_anti-clockwise_torque-control

Wera - Click-Torque C 2 Push R/L
 05075625001 - 4013288218926

Wera Werkzeuge GmbH
 Korzter Straße 21-25
 D-42349 Wuppertal
 Tel: +49 (0)2 02 / 40 45-0
 E-Mail: info@wera.de